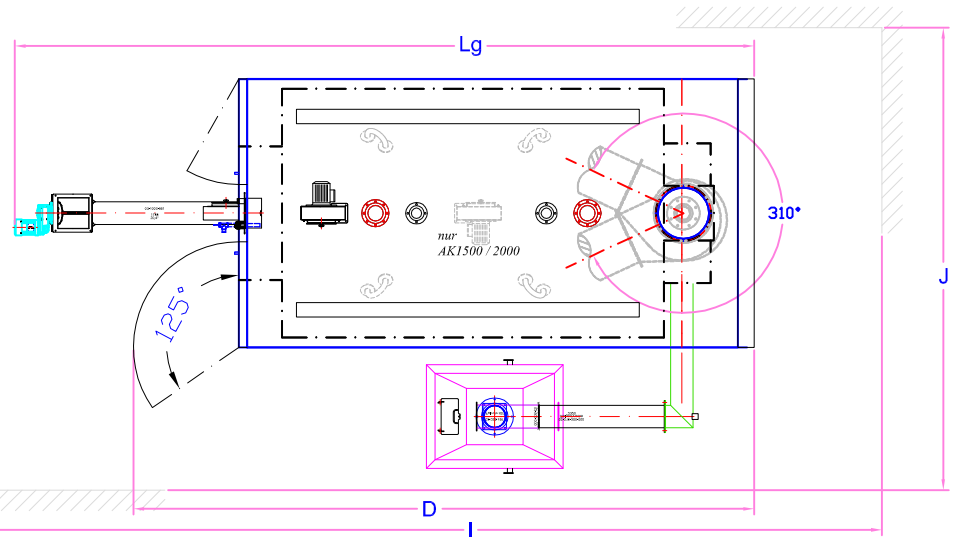
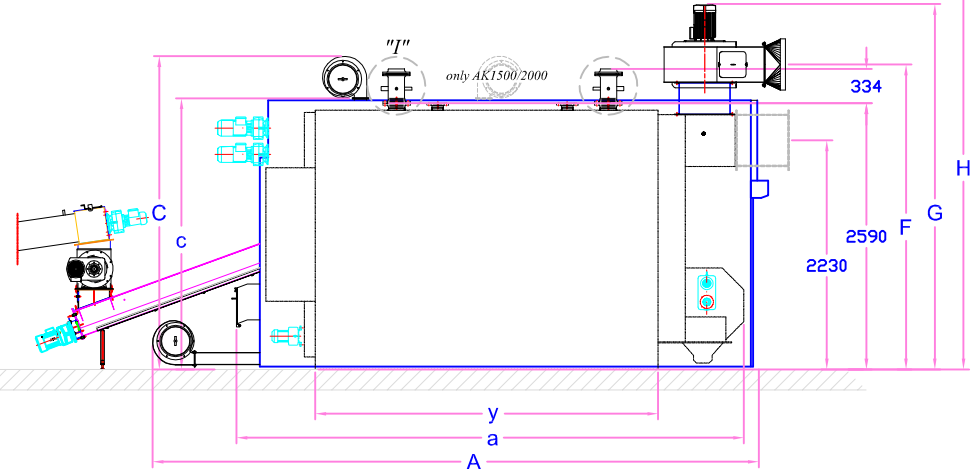
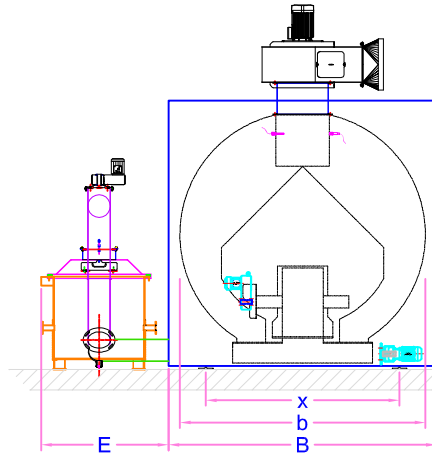
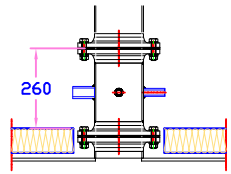


Detail I

Connection DN150
Flange DIN 2631 PN6



Technical data

		RHK-AK 2000
	Nominal heat output	1490 kW
	Continuous heat output	1490 kW
	Heating surface	164 m ²
Measurements		
A	Boiler length	7,95 m
B	Boiler width	2,65 m
C	Boiler height	3,05 m
a	Delivery length	7,35 m
b	Delivery width	2,50 m
c	Delivery height	2,65 m
D	Boiler length incl. pivoting range of doors	8,44 m
Lg	Total boiler length incl. infeed stoker	9,60 m
E	min. space requirements for ash bin 900 I Mounting possible in 4 directions	1,25 m
F	Axis of flue gas blower outlet of FGB 500	3,40 m
G	Top edge of flue gas blower (310° rotatable)	3,60 m
H	min. room height	3,75 m
I	min. room length	11,40 m
J	min. room width	4,50 m
	min. chimney diameter (chimney draft 1,0 mbar)	0,50 m
Weights		
	Complete boiler	22.000 kg
	Water content	11.000 l
	Boiler filled	33.000 kg
Load transmission through boiler skids		
x	Distance between axles of boiler skids	1,90 m
y	Length of boiler skids	5,75 m
Equipment		
	Connecting tube DN 150 (see Detail I)	•
	Connecting tube DN 100 (Safety flow, Safety return)	•
	Combustion chamber door 400mm x 400mm	•
	Deashing chamber door 400mm x 400mm	•
Boiler monitoring		
	3 sleeves ½" per connecting tube (sensor)	•
	1 sleeve 1" per connecting tube (thermal discharge safety device)	•
RG	Flue gas temperature monitoring	•
LS	Lambda sensor	•
	CO ²	10%
	Efficiency	> 90%
	Flue gas mass flow	1,556 kg/s
	Flue gas temperature	180,00 °C
	Draft requirement	0,40 mbar
	Water pressure drop at 10K	351,58 mbar
	min. water flow volume	5.000 l/h
	max. water flow volume	86.000 l/h

Änderungen:

Index:	Bemerkung:	l.:	Datum:	gez.:
a	Feuerungswärmeleistung	EH	19.09.2007	BU
b	Gewichtangaben überarbeitet	rb	06.12.2007	BU
c	Version 02	.	16.01.2008	BU
d	Tabelle überarbeitet	EH	10.02.2009	BU
e	Tabelle überarbeitet	RBj	07.06.2016	BW

Blattnummer:

03-1100-000 .001

gez.: BU/BW

Datum: 07.06.2016

Verwendungsbereich:

RHK-AK 2000 UK

Artikel Nr.:

03-1100-000

Zzeichnungsinhalt:

Technische Daten

Schweißerei
Montage
Endmontage
Kantbank
Rundmaschine
Dreherei
Zuschlitt
Lackierer
Isolierung
Elektriker
Versand
Kundendienst
Monteure

HEIZOMAT Gerätebau-Energiesysteme GmbH, Maicha 21, 91710 Gunzenhausen, Tel. 0 98 36 / 97 97-0