

Technical data RHK-AK 100 without e-filter

transport width (mm)	890
transport length (mm)	1845
transport height (mm)	1670
width with cover panel (mm)	1085
length with cover panel (mm)	1940
height with cover panel (mm)	1645
water content (l)	475
weight (kg)	1500
heat exchanger surface (m ²)	8,90
continuous heat load (kW)	0-100
heating output (kW)	100
CO ² (%)	10,0
efficiency (%)	>90
flue gas mass flow (kg/s)	0,085000
flue gas temperature (°C)	180
flue depress (PA)	17
flue depress with underpressure monitoring (PA)	10
drop at dT 10 pressure K (mbar)	15,70
max. pressure (bar)	3
flow heat (inch)	1 1/2
heat return (inch)	1 1/2
safety flow (inch)	1
safety return (inch)	1
filling and emptying (inch)	1/2
thermowell (inch)	1/2
flue gas pipe diameter (mm)	250
min. opening for air supply (cm ²)	250
min. volume flow rate for return temp. increase at 15K (m ³ /h)	1,91

Electrical connection data

Boilers up to 100 kW

Connection	400V / 3N PE CEE plug 16A
Protection	C 16A
RCD switch	Type A IΔN 30mA

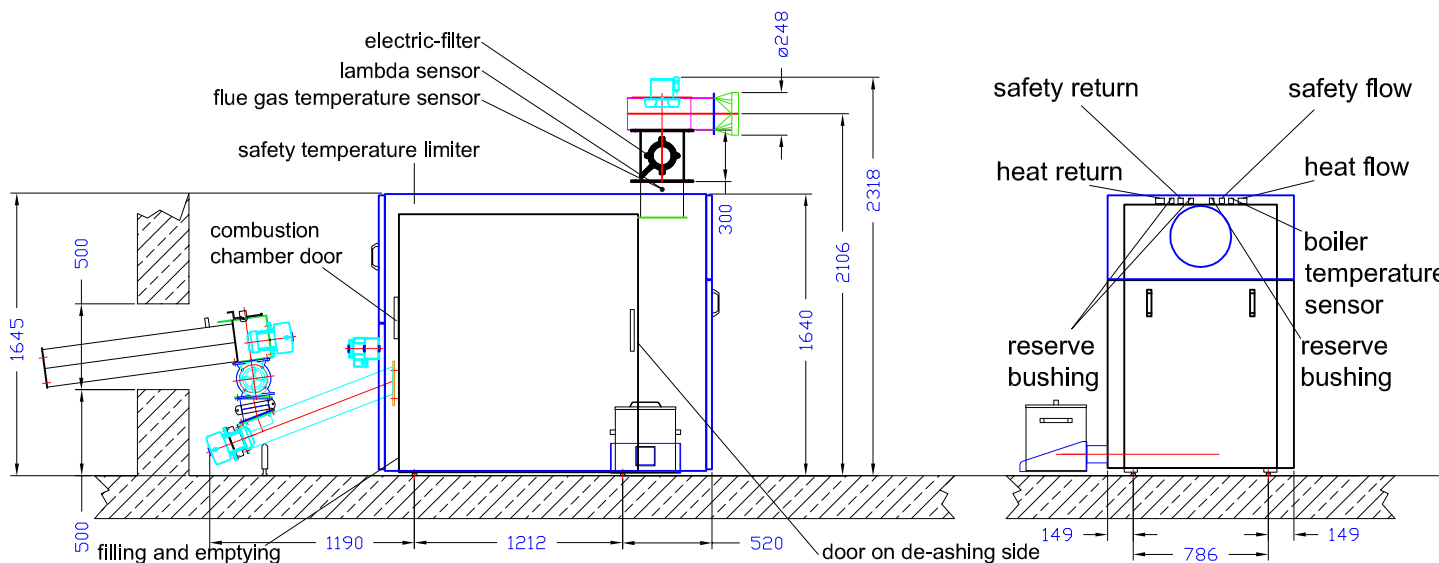
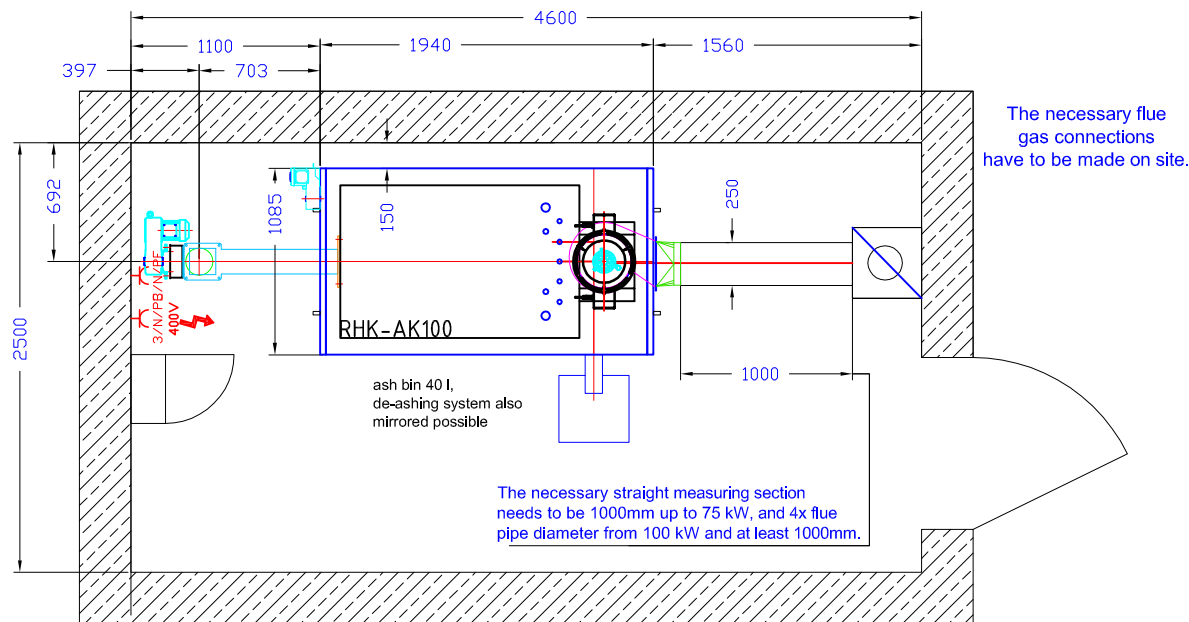
The boiler should be accessible from three sides. The discharging system should not cross the heating room. Room height and position of the particle separator(s)* should be discussed with the Heizomat team. Connecting points for the necessary potential equalization on the boiler see supplementary sheets "Connection of the Heizomat boiler system to the main potential equalization of a building" *.

Technical changes that serve the permanent further development remain reserved.

*Optional equipment, depending on the statutory provisions for the country of destination.

Status 01.07.2017

Heizomat GmbH Gerätebau- Energiesysteme
Maicha 21 - 91710 Gunzenhausen - 09836/9797-0



Technical data RHK-AK 100 with e-filter

transport width (mm)	890
transport length (mm)	1845
transport height (mm)	1670
width with cover panel (mm)	1085
length with cover panel (mm)	1940
height with cover panel (mm)	1645
water content (l)	475
weight (kg)	1500
heat exchanger surface (m ²)	8,90
continuous heat load (kW)	0-100
heating output (kW)	100
CO ² (%)	10,0
efficiency (%)	>90
flue gas mass flow (kg/s)	0,085000
flue gas temperature (°C)	180
flue depress (PA)	17
flue depress with underpressure monitoring (PA)	10
drop at dT 10 pressure K (mbar)	15,70
max. pressure (bar)	3
flow heat (inch)	1 1/2
heat return (inch)	1 1/2
safety flow (inch)	1
safety return (inch)	1
filling and emptying (inch)	1/2
thermowell (inch)	1/2
flue gas pipe diameter (mm)	250
min. opening for air supply (cm ²)	250
min. volume flow rate for return temp. increase at 15K (m ³ /h)	1,91

Electrical connection data

Boilers up to 100 kW

Connection	400V / 3N PE CEE plug 16A
Protection	C 16A
RCD switch	Type A IΔN 30mA

Technical data electric-filter

Heizoclean EF185, electrostatic	2x in flue pipe 250
---------------------------------	------------------------



Heizomat GmbH Gerätebau- Energiesysteme
Maicha 21 - 91710 Gunzenhausen - 09836/9797-0

The boiler should be accessible from three sides. The discharging system should not cross the heating room. Room height and position of the particle separator(s)* should be discussed with the Heizomat team. Connecting points for the necessary potential equalization on the boiler see supplementary sheets "Connection of the Heizomat boiler system to the main potential equalization of a building" *.

Technical changes that serve the permanent further development remain reserved.

*Optional equipment, depending on the statutory provisions for the country of destination.

Status 01.07.2017