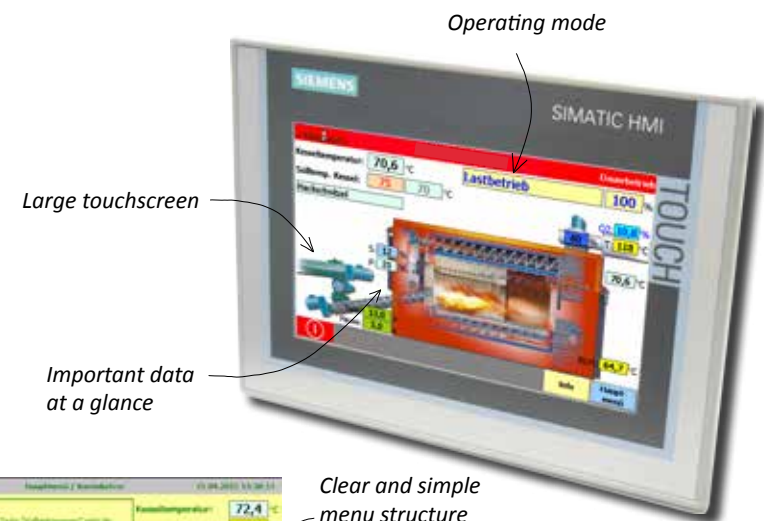


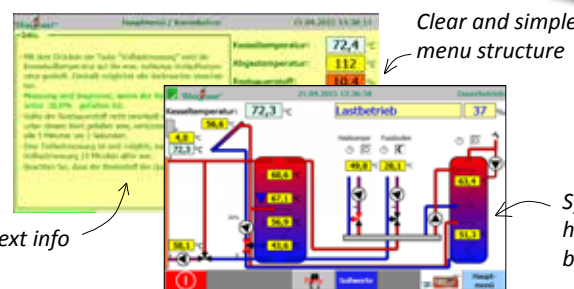
**Modern industrial control system**



Large touchscreen

Important data at a glance

Operating mode



Clear and simple menu structure

Short text info

System manager in control of heating circuits, hot water, buffer charge etc.



Self-explanatory operation



Control board assembly at the Maicha factory

Industry quality made in Germany

Guaranteed 20 years spare part availability



**HeizoControl ET 200 SP:**  
The use of Siemens products guarantees longevity and they are available worldwide.

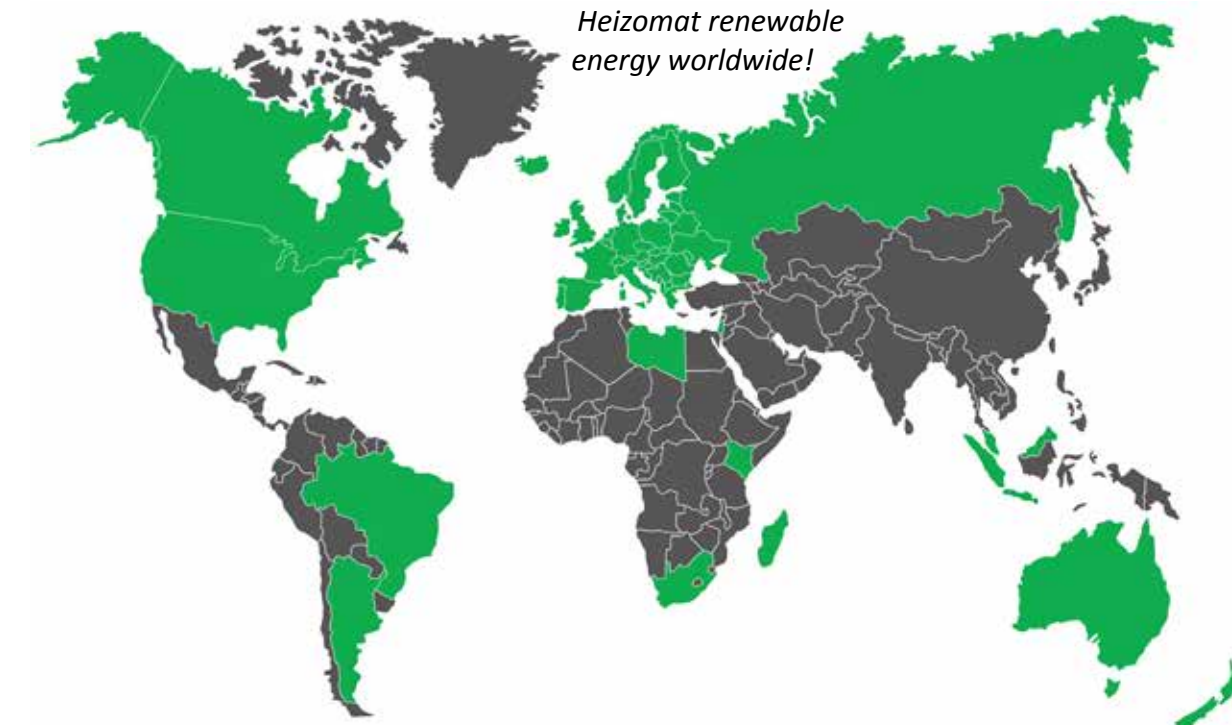
**System manager: (optional)**  
The system manager takes over the control of up to six weather compensated heating circuits, the domestic hot water with circulation and solar system.

**Buffer management: (optional)**  
Charging of up to two buffer storages with help of two, four or eight sensors.

**Level sensor: (optional)**  
Registration of the combustion chamber temperature.

**Sm@rtServer:**  
Boiler monitoring on PC, smartphone or tablet. The Sm@rtServer is part of the standard equipment.

- Additional features:**
- Continuous load modulation
  - Ignition mode
  - Fuel quantity control
  - Lambda control
  - Return temperature increase
  - Return temperature monitoring
  - Smart-start function
  - Operating hour counter
  - Selection of various biomass fuels
  - Data record
  - Boiler sequence control
  - Email-Messenger for fault messages
  - Power control according to heat meter
  - Modbus TCP interface
  - Temperature control via external signal



Heizomat renewable energy worldwide!



Maicha Factory

Since 1982, approximately 400 employees and more than 35,000 customers worldwide contribute to a heat and energy revolution! Be a part of it!



Heidenheim Factory



Energy in balance with nature



Energy in balance with nature



Innovative heating systems for:

- Woodchips
- Biomass
- Pellets
- Chips



Our partner:



**Heizomat Gerätebau- Energiesysteme GmbH**  
Maicha 21 • 91710 Gunzenhausen  
Tel.: +49 (0) 9836 97 97 - 0  
Fax: +49 (0) 9836 97 97 - 97  
info@heizomat.de • www.heizomat.de

German quality since 1982



### HSK-RA Woodchip Boiler

**Power output range:**  
15 - 200 kW

**Efficiency:**  
> 90 %

**Combustion material:**  
Wood chips acc. to EN 17225-4 A1/P45 M30, pellets, sawdust

**Combustion chamber:**  
Boiler wall thickness 6mm, protected by refractory lining

**Heat exchanger:**  
200mm Ø large cleaning augers for easy automated cleaning. Situated inside horizontal pipes, 6.2mm wall thickness.

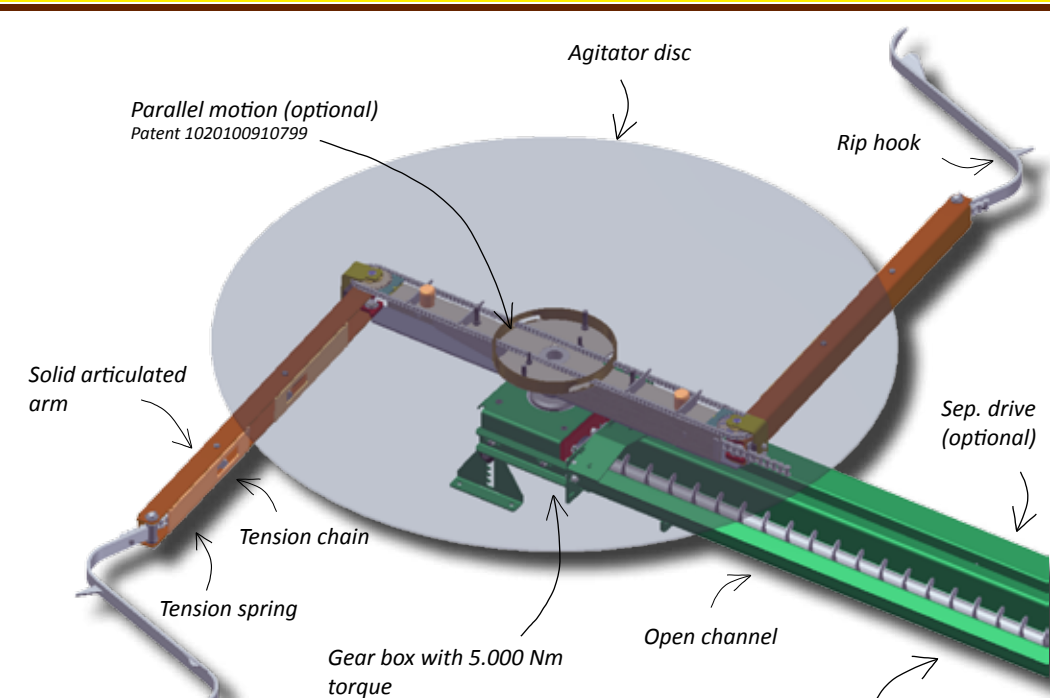
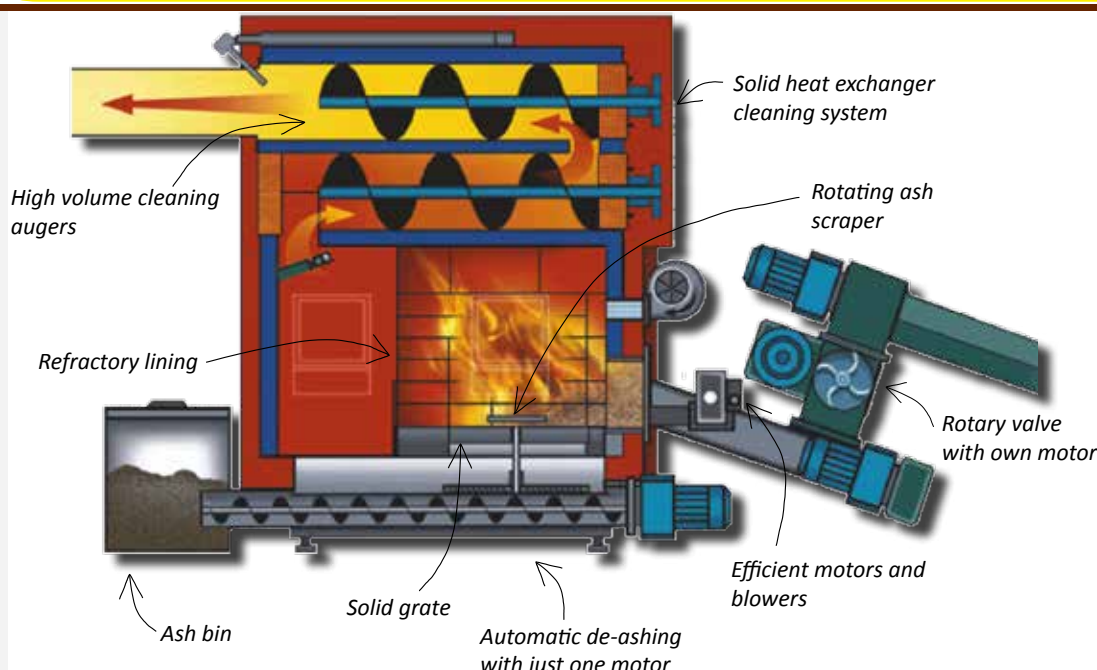
**Horizontal Heat Exchanger Pipes:**  
Due to the horizontal arrangement of the heat exchanger pipes, a natural rise is created which reduces the power consumption and ensures higher energy output. Thanks to the solid 8mm thick steel cleaning augers the registers are cleaned automatically. The result is high efficiency with low flue gas temperatures.

**Automatic ash removal system:**  
De-ashing through solid cast grate with rotating ash scraper and cleaning of the heat exchanger through de-ashing augers.

**Ash bins:**  
Available in 40L, 240L or 900L

**Insulation:**  
60mm

**Glow-bar ignition:**  
Ignition with a solid glow-bar. Ignition unaffected by the ashes, clogging or back-pressure of flue gas. Low energy consumption approx. 0.15kW/h per ignition!



### We revolutionise the heating world with woodchips and pellets!

Since 1982 we have been producing sustainable heating systems with the main focus on renewable energy in two factories in Bavaria, Germany. Many of our inventions have become state of the art in our sector and make the automated burning of wood as easy as burning oil or gas. Our specialised components like the chain discharging system, the patented parallel motion discharging system and the new ET200 control unit continue to transform biomass heating technology leading the way to the future.



### Discharging

**Articulated arm:**  
Solid agitator arms: sizes Ø1m - 7m, pre-tensioned with chain and spring. No intermediate floor required. Maximum fill height is 1.5x the diameter.

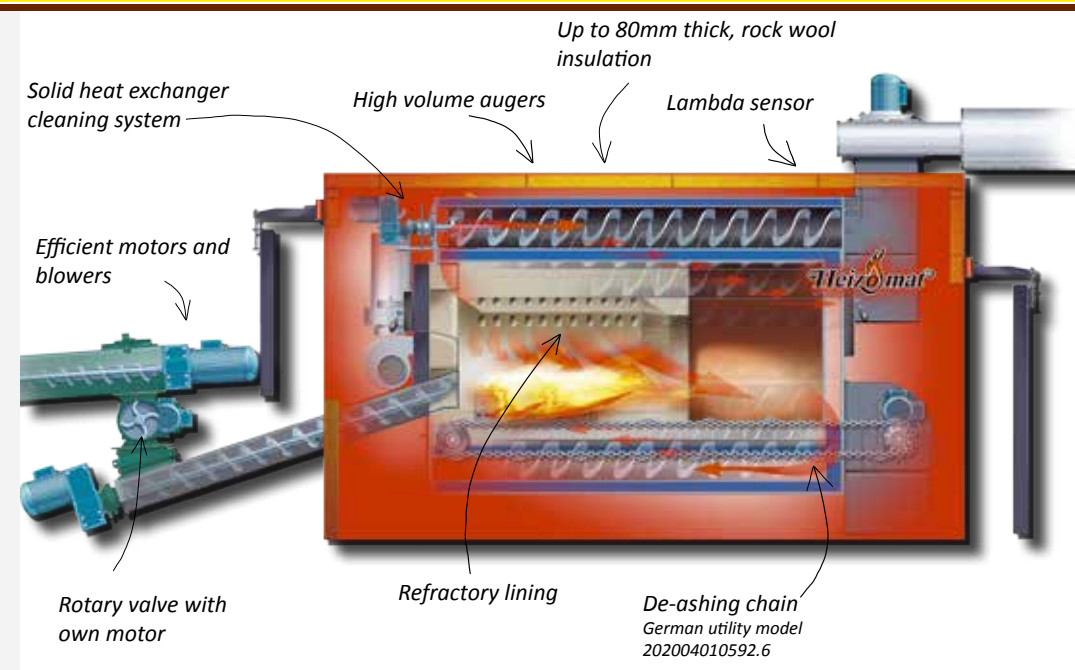
**Parallel motion: - Patent -**  
Concentric discharge of the fuel store. No kick-back of the rip hooks and no pressure on the hinges or connections.

**Bunker gearbox:**  
Specially sealed bevel-helical gear unit with 5000 Nm torque. Built in waterproof cast housing, completely maintenance free.

**Discharging auger:**  
Discharging auger on 50mm solid shaft. Smooth transport thanks to loosening geometry.

**Discharging chain:**  
Compared to the auger, the energy consumption can be up to 50% less. Almost no abrasion, transport of woodchips (P45) and pellets without grinding of combustion material.  
**Lengths up to 20m and more possible with minimised energy consumption!**

**Four chamber rotary valve:**  
Very effective IBS tested burn-back protection with integrated cutting blades. Due to the four chambers, it is almost not possible for nails or other foreign bodies to get stuck. The rotary valve cuts at an angle to allow an effortless cut and is built in a solid chassis.  
**Standard P45 woodchips can be used.**



### Biomass boiler RHK-AK

**Power output range:**  
30 - 990 kW

**Efficiency:**  
> 90 %

**Combustion material:**  
Woodchips acc. to EN 17225-4 A1/P45 M30, pellets and non-woody biomass

**Combustion chamber:**  
Boiler made from 8mm steel with heart shape refractory lining made of stable refractory concrete.

**Heat exchanger:**  
200mmØ horizontal large cleaning augers for easy automated cleaning. Situated inside horizontal pipes, 6.2mm wall thickness.

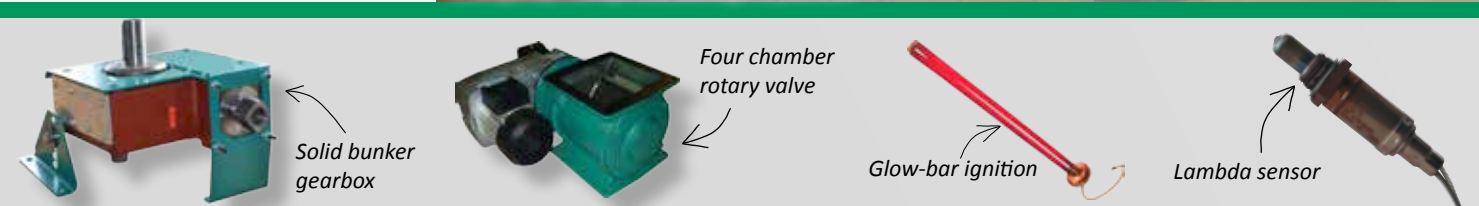
**Horizontal Heat Exchanger Pipes:**  
Due to the horizontal arrangement of the heat exchanger pipes, a natural rise is created which reduces the power consumption and ensures a higher energy output. Thanks to the solid 8mm thick steel cleaning augers the registers are cleaned automatically. The result is high efficiency with low flue gas temperatures.

**Automatic ash cleaning system:**  
De-ashing through patented chain and cleaning of the heat exchanger through automatic de-ashing augers.

**Ash bins:**  
Available in 40L, 240L or 900L

**Insulation:**  
80 mm sandwich panels

**Glow-bar ignition:**  
Ignition with a solid glow-bar. Ignition unaffected by the ashes, clogging or back-pressure of flue gas. Low energy consumption- approx. 0.15kW/h per ignition!



Energy in balance with nature