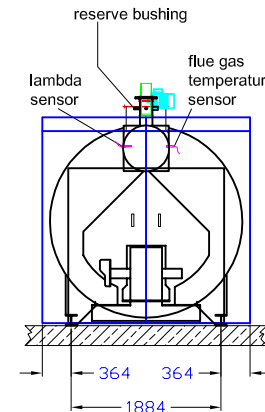
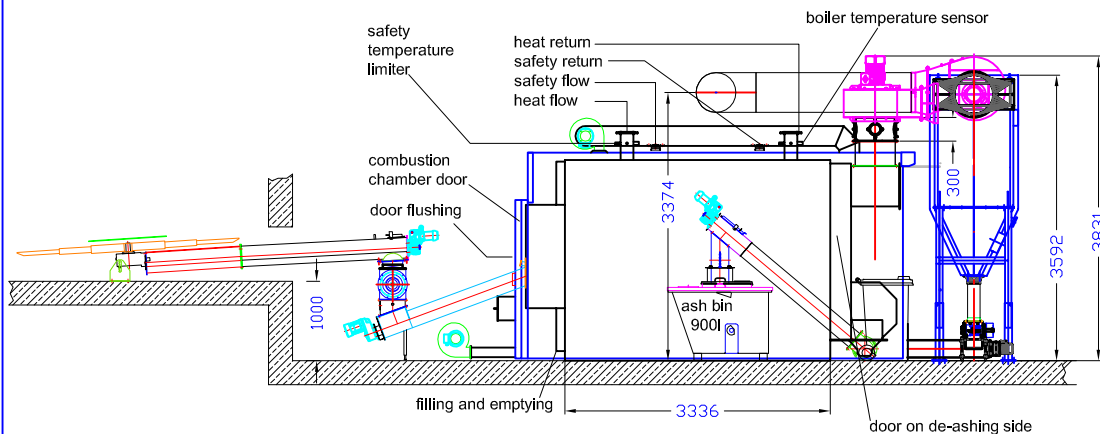


Electrical connection data Boilers from 900 kW	
Connection	Hardwiring 400V / 3N PE
Protection	C 40A
RCD switch	Type B IΔN 300mA

Technical data RHK-AK 900 e-filter/ Cyclone with separate de-ashing	
transport width (mm)	2500
transport length (mm)	4950
transport height (mm)	2650
width with cover panel (mm)	2650
length with cover panel (mm)	5020
height with cover panel (mm)	3050
water content (l)	5600
weight (kg)	14000
heat exchanger surface (m ²)	85
continuous heat load (kW) *wood chips/ **pellets	*850/ **800
rated thermal input (kW)	900
CO ² (%)	10,0
efficiency (%)	>90
flue gas mass flow (kg/s)	0,778000
flue gas temperature (°C)	180
flue depress (PA)	32
flue depress with underpressure monitoring (PA)	10
drop at dT 10 pressure K (mbar)	312,40
max. pressure (bar)	3
flow heat (DN)	150
heat return (DN)	150
safety flow (DN)	100
safety return (DN)	100
filling and emptying (inch)	1 1/2
thermowell (inch)	1/2
door flushing (inch)	3/4
flue gas pipe diameter (mm)	500
min. opening for air supply (cm ²)	2050
min. volume flow rate for return temp. increase at 15K (m ³ /h)	18,92

The necessary flue gas connections have to be made on site.



Technical data cyclone MC304	
transport width (mm)	1110
transport length (mm)	1530
transport height (mm)	3200
weight (kg)	1230

Technical data electric-filter	
Heizoclean EF185, electrostatic	4x in flue pipe 500

The boiler should be accessible from three sides. The discharging system should not cross the heating room. Room height and position of the particle separator(s)* should be discussed with the Heizomat team. Connecting points for the necessary potential equalization on the boiler see supplementary sheets "Connection of the Heizomat boiler system to the main potential equalization of a building" *.

Technical changes that serve the permanent further development remain reserved.

*Optional equipment, depending on the statutory provisions for the country of destination.

Status 01.07.2017



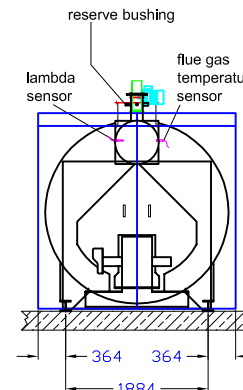
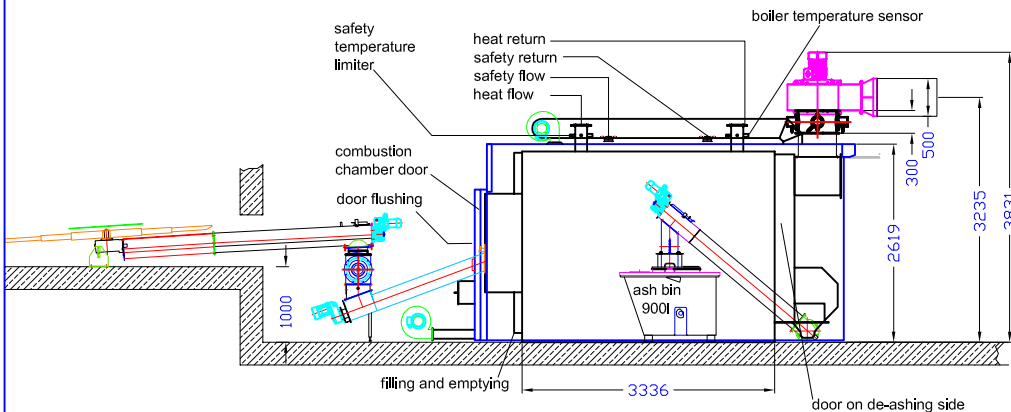
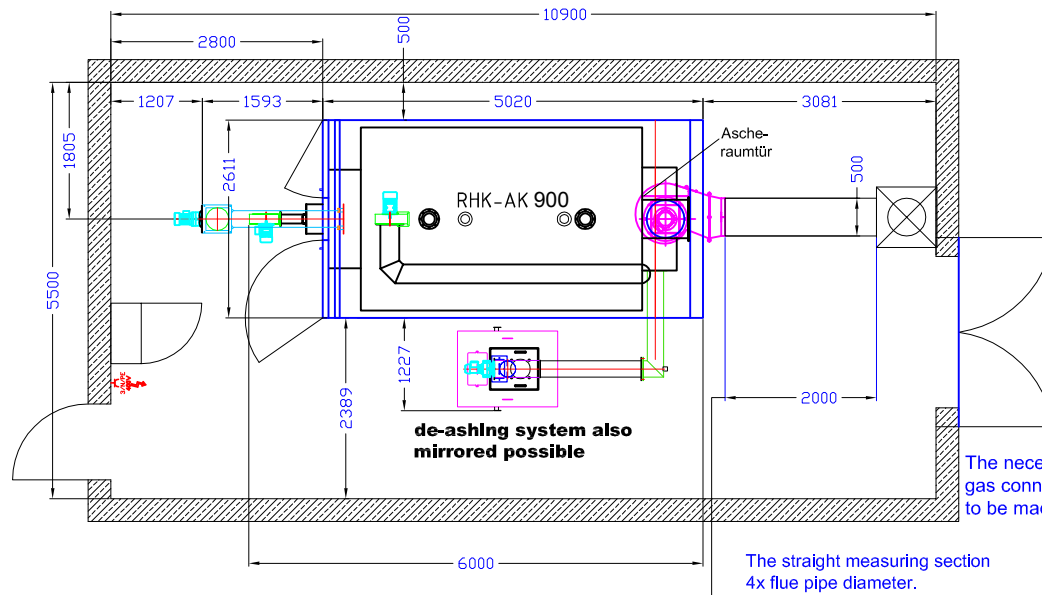
Heizomat GmbH Gerätebau- Energiesysteme
Maicha 21 - 91710 Gunzenhausen - 09836/9797-0

**Electrical connection data
Boilers from 900 kW**

Connection	Hardwiring 400V / 3N PE
Protection	C 40A
RCD switch	Type B IΔN 300mA

**Technical data RHK-AK 900
electric-filter**

transport width (mm)	2500
transport length (mm)	4950
transport height (mm)	2650
width with cover panel (mm)	2650
length with cover panel (mm)	5020
height with cover panel (mm)	3050
water content (l)	5600
weight (kg)	14000
heat exchanger surface (m ²)	85
continuous heat load (kW) *wood chips/ **pellets	*850/ **800
rated thermal input (kW)	900
CO ² (%)	10,0
efficiency (%)	>90
flue gas mass flow (kg/s)	0,778000
flue gas temperature (°C)	180
flue depress (PA)	32
flue depress with underpressure monitoring (PA)	10
drop at dT 10 pressure K (mbar)	312,40
max. pressure (bar)	3
flow heat (DN)	150
heat return (DN)	150
safety flow (DN)	100
safety return (DN)	100
filling and emptying (inch)	1 1/2
thermowell (inch)	1/2
door flushing (inch)	3/4
flue gas pipe diameter (mm)	500
min. opening for air supply (cm ²)	2050
min. volume flow rate for return temp. increase at 15K (m ³ /h)	18,92



The boiler should be accessible from three sides. The discharging system should not cross the heating room. Room height and position of the particle separator(s)* should be discussed with the Heizomat team. Connecting points for the necessary potential equalization on the boiler see supplementary sheets "Connection of the Heizomat boiler system to the main potential equalization of a building" *.

Technical changes that serve the permanent further development remain reserved.

*Optional equipment, depending on the statutory provisions for the country of destination.

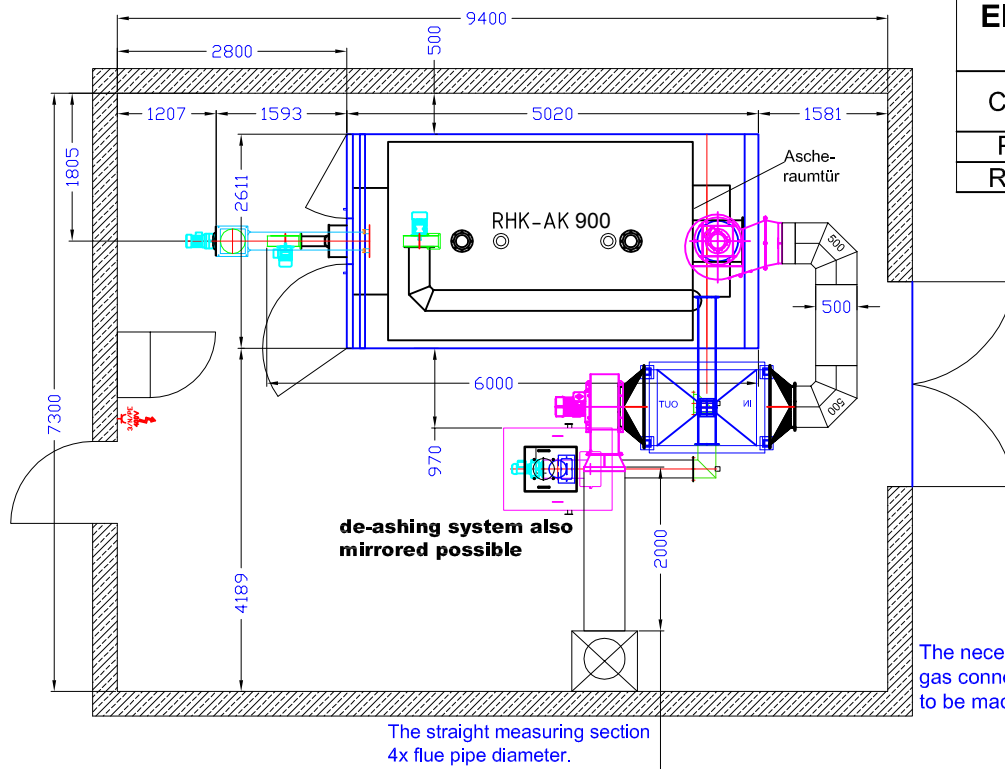
Status 01.07.2017

Technical data electric-filter

Heizoclean EF185, 4x
electrostatic in flue pipe 500



Heizomat GmbH Gerätebau- Energiesysteme
Maicha 21 - 91710 Gunzenhausen - 09836/9797-0



**Electrical connection data
Boilers from 900 kW**

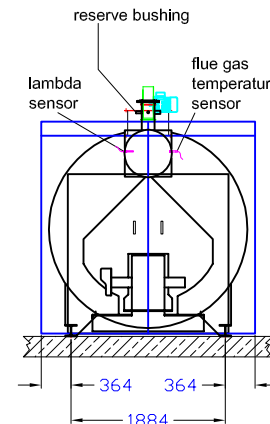
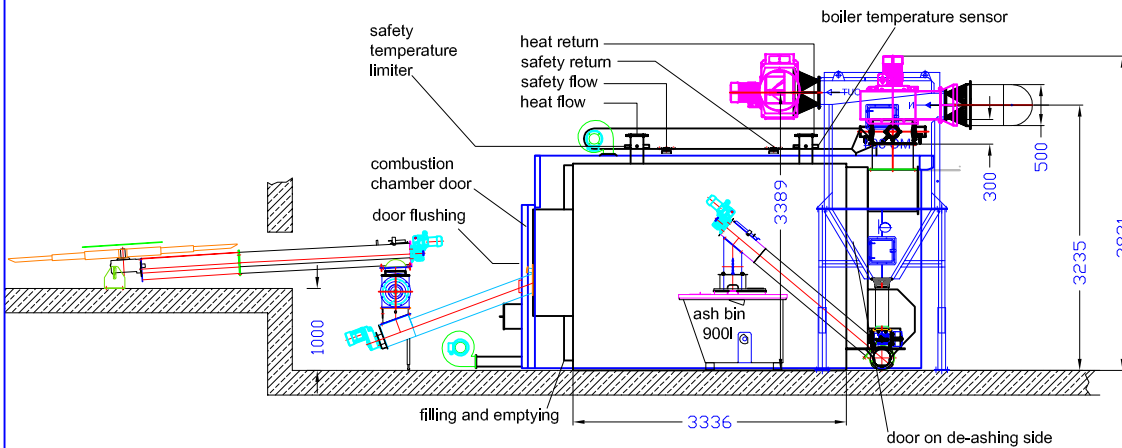
Connection	Hardwiring 400V / 3N PE
Protection	C 40A
RCD switch	Type B IΔN 300mA

**Technical data RHK-AK 900
e-filter/ cyclone with de-ashing**

transport width (mm)	2500
transport length (mm)	4950
transport height (mm)	2650
width with cover panel (mm)	2650
length with cover panel (mm)	5020
height with cover panel (mm)	3050
water content (l)	5600
weight (kg)	14000
heat exchanger surface (m ²)	85
continuous heat load (kW) *wood chips/ **pellets	*850/ **800
rated thermal input (kW)	900
CO ² (%)	10,0
efficiency (%)	>90
flue gas mass flow (kg/s)	0,778000
flue gas temperature (°C)	180
flue depress (PA)	32
flue depress with underpressure monitoring (PA)	10
drop at dT 10 pressure K (mbar)	312,40
max. pressure (bar)	3
flow heat (DN)	150
heat return(DN)	150
safety flow (DN)	100
safety return(DN)	100
filling and emptying (inch)	1 1/2
thermowell (inch)	1/2
door flushing (inch)	3/4
flue gas pipe diameter (mm)	500
min. opening for air supply (cm ²)	2050
min. volume flow rate for return temp. increase at 15K (m ³ /h)	18,92

The necessary flue gas connections have to be made on site.

The straight measuring section 4x flue pipe diameter.



Technical data cyclone MC304

transport width (mm)	1110
transport length (mm)	1530
transport height (mm)	3200
weight (kg)	1230

Technical data electric-filter

Heizoclean EF185, electrostatic	4x in flue pipe 500
---------------------------------	---------------------

The boiler should be accessible from three sides. The discharging system should not cross the heating room. Room height and position of the particle separator(s)* should be discussed with the Heizomat team. Connecting points for the necessary potential equalization on the boiler see supplementary sheets "Connection of the Heizomat boiler system to the main potential equalization of a building" *.

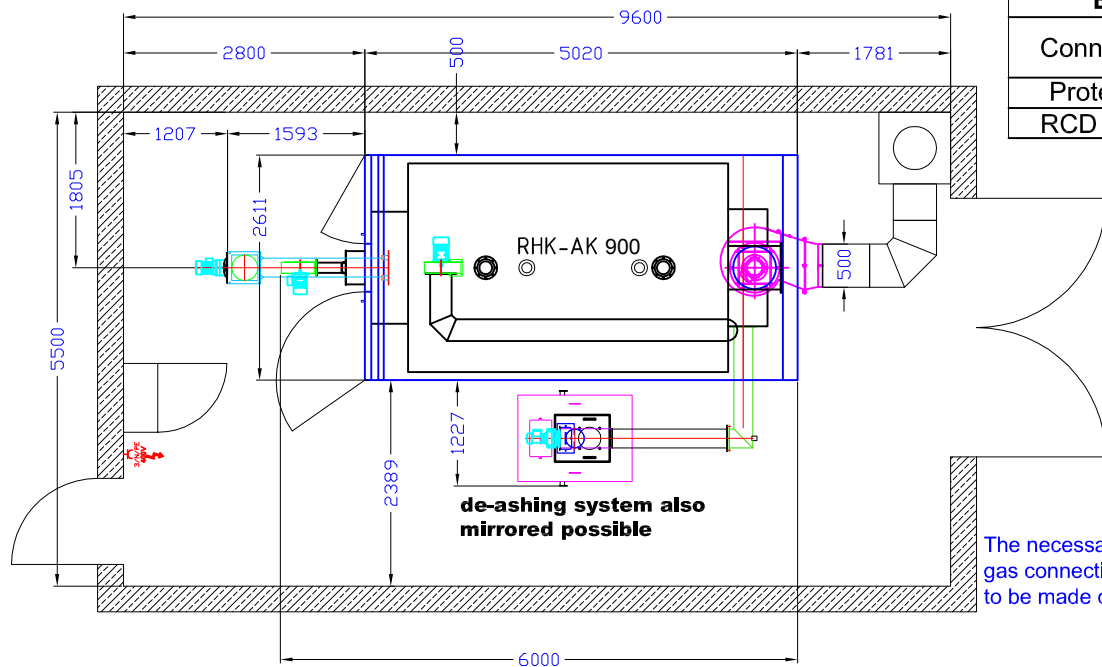
Technical changes that serve the permanent further development remain reserved.

*Optional equipment, depending on the statutory provisions for the country of destination.

Status 01.07.2017

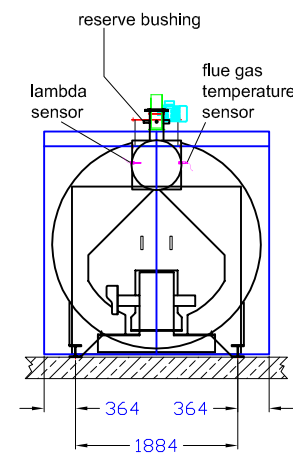
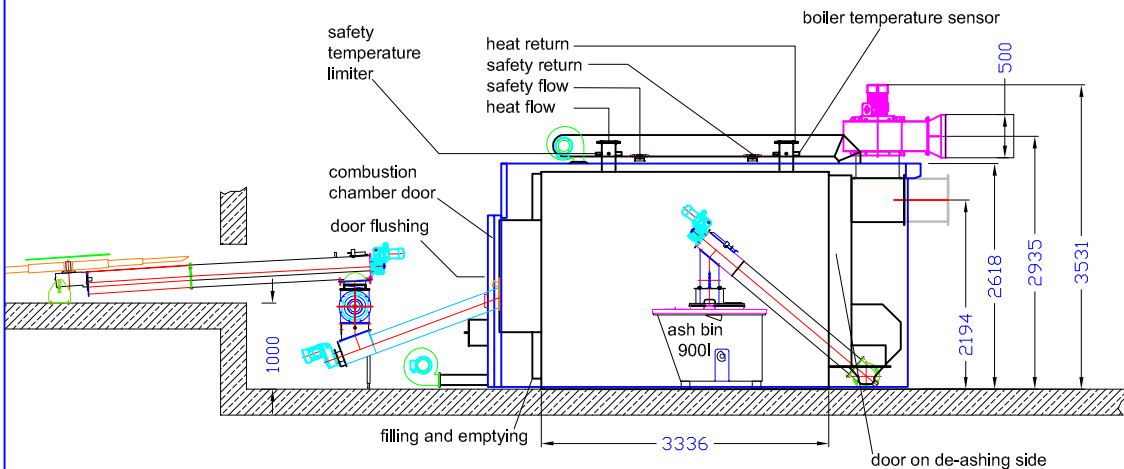


Heizomat GmbH Gerätebau- Energiesysteme
Maicha 21 - 91710 Gunzenhausen - 09836/9797-0



Electrical connection data Boilers from 900 kW	
Connection	Hardwiring 400V / 3N PE
Protection	C 40A
RCD switch	Type B IΔN 300mA

Technical data RHK-AK 900 without e-filter	
transport width (mm)	2500
transport length (mm)	4950
transport height (mm)	2650
width with cover panel (mm)	2650
length with cover panel (mm)	5020
height with cover panel (mm)	3050
water content (l)	5600
weight (kg)	14000
heat exchanger surface (m ²)	85
continuous heat load (kW) *wood chips/ **pellets	*850/ **800
rated thermal input (kW)	900
CO ² (%)	10,0
efficiency (%)	>90
flue gas mass flow (kg/s)	0,778000
flue gas temperature (°C)	180
flue depress (PA)	32
flue depress with underpressure monitoring (PA)	10
drop at dT 10 pressure K (mbar)	312,40
max. pressure (bar)	3
flow heat (DN)	150
heat return(DN)	150
safety flow (DN)	100
safety return(DN)	100
filling and emptying (inch)	1 1/2
thermowell (inch)	1/2
door flushing (inch)	3/4
flue gas pipe diameter (mm)	500
min. opening for air supply (cm ²)	2050
min. volume flow rate for return temp. increase at 15K (m ³ /h)	18,92



The boiler should be accessible from three sides. The discharging system should not cross the heating room. Room height and position of the particle separator(s)* should be discussed with the Heizomat team. Connecting points for the necessary potential equalization on the boiler see supplementary sheets "Connection of the Heizomat boiler system to the main potential equalization of a building" *.

Technical changes that serve the permanent further development remain reserved.

*Optional equipment, depending on the statutory provisions for the country of destination.

Status 01.07.2017



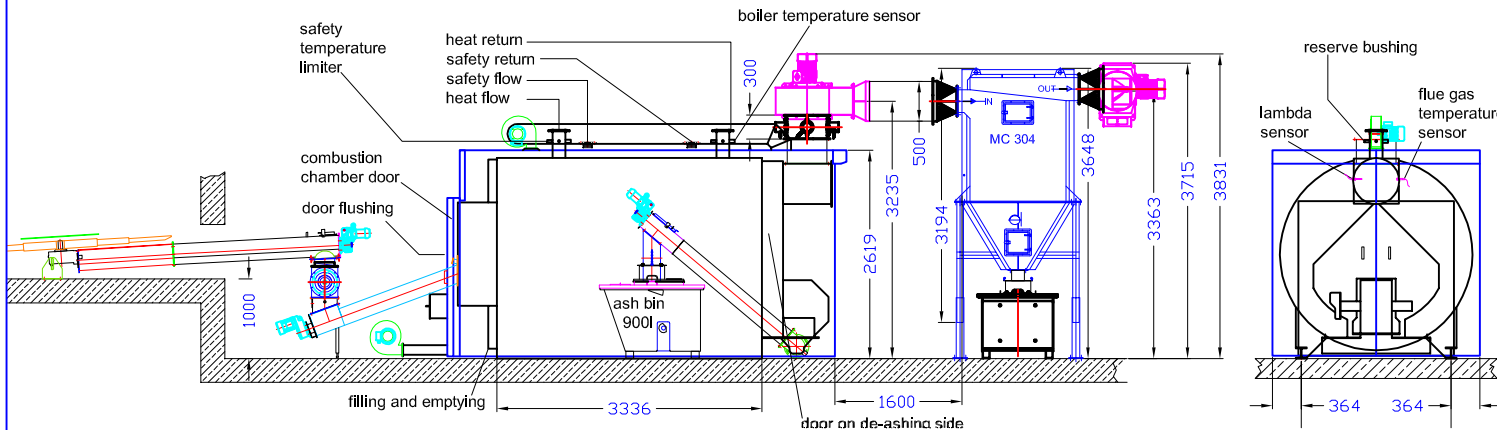
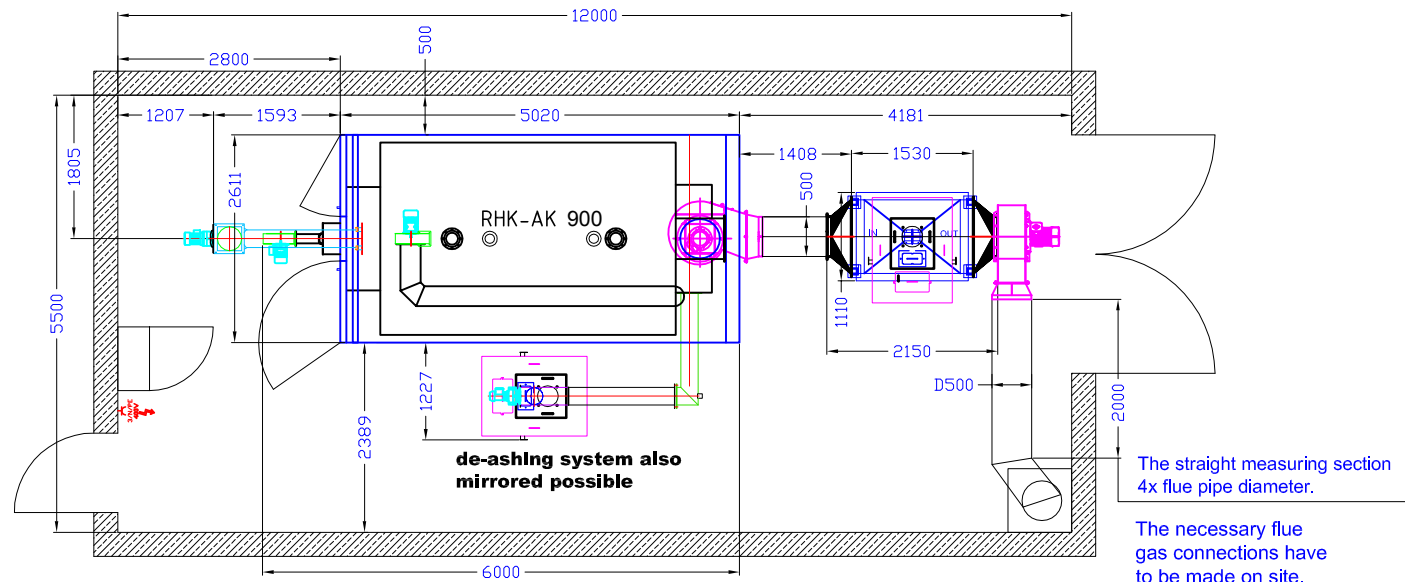
Heizomat GmbH Gerätebau- Energiesysteme
Maicha 21 - 91710 Gunzenhausen - 09836/9797-0

**Electrical connection data
Boilers from 900 kW**

Connection	Hardwiring 400V / 3N PE
Protection	C 40A
RCD switch	Type B IΔN 300mA

**Technical data RHK-AK 900
e-filter/ Cyclone**

transport width (mm)	2500
transport length (mm)	4950
transport height (mm)	2650
width with cover panel (mm)	2650
length with cover panel (mm)	5020
height with cover panel (mm)	3050
water content (l)	5600
weight (kg)	14000
heat exchanger surface (m ²)	85
continuous heat load (kW) *wood chips/ **pellets	*850/ **800
rated thermal input (kW)	900
CO ² (%)	10,0
efficiency (%)	>90
flue gas mass flow (kg/s)	0,778000
flue gas temperature (°C)	180
flue depress (PA)	32
flue depress with underpressure monitoring (PA)	10
drop at dT 10 pressure K (mbar)	312,40
max. pressure (bar)	3
flow heat (DN)	150
heat return (DN)	150
safety flow (DN)	100
safety return (DN)	100
filling and emptying (inch)	1 1/2
thermowell (inch)	1/2
door flushing (inch)	3/4
flue gas pipe diameter (mm)	500
min. opening for air supply (cm ²)	2050
min. volume flow rate for return temp. increase at 15K (m ³ /h)	18,92



The boiler should be accessible from three sides. The discharging system should not cross the heating room. Room height and position of the particle separator(s)* should be discussed with the Heizomat team. Connecting points for the necessary potential equalization on the boiler see supplementary sheets "Connection of the Heizomat boiler system to the main potential equalization of a building" *.

Technical changes that serve the permanent further development remain reserved.

*Optional equipment, depending on the statutory provisions for the country of destination.

Technical data cyclone MC304

transport width (mm)	1110
transport length (mm)	1530
transport height (mm)	3200
weight (kg)	1230

Technical data electric-filter

Heizoclean EF185, electrostatic	4x in flue pipe 500
------------------------------------	------------------------



Heizomat GmbH Gerätebau- Energiesysteme
Maicha 21 - 91710 Gunzenhausen - 09836/9797-0

Status 01.07.2017